

# Operator Terminals CP400

Performance and Comfort,  
your Best Choice for Operator Terminals



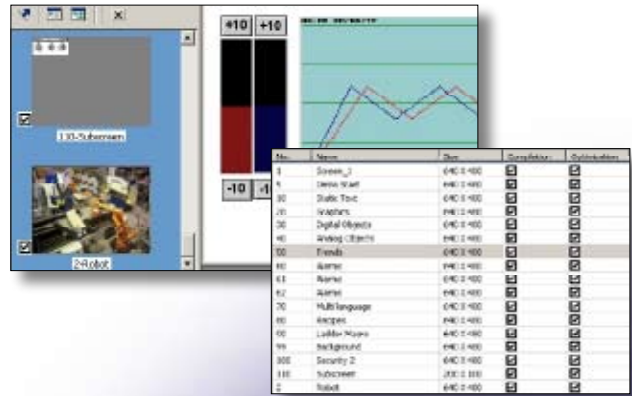
# Performance and Comfort, your Best Choice for

## Performance

### Quick and easy project creation and management

Quickly view and easily manage your project components using the **screen manager** (detailed list or screen miniatures).

Simplify the creation, modification, sorting and identification of your project data via the **cross-references** function.

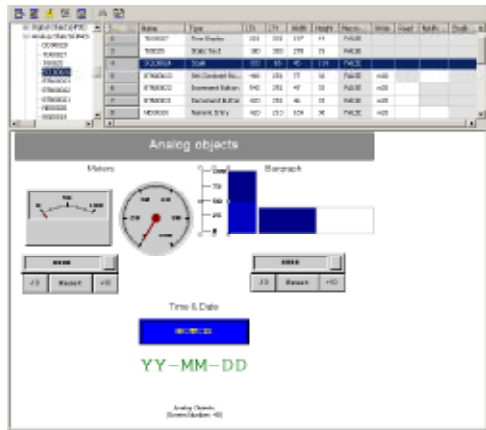


### Easy testing and use

Test your projects, screens and alarms as well as your communication and controller functions quickly via **on- and off-line simulation**.

Change language quickly and easily using the **multi-language support** function.

### Secured data and operations

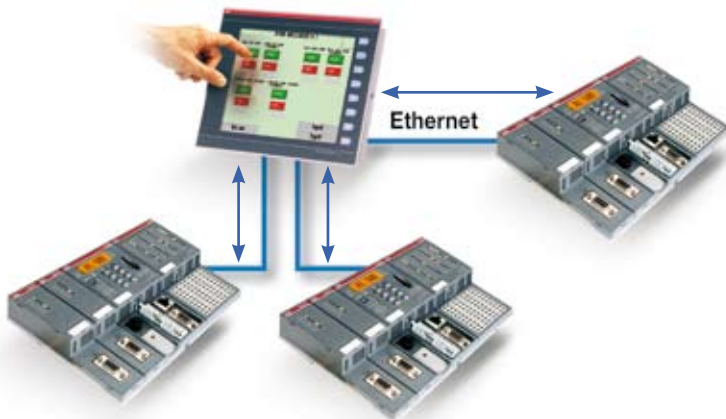


Protect your files and machine configurations using global and object-specific passwords (9 protection levels) to prevent downloading of the application.

### Simplified adaptability and connectivity

Connect your HMIs to the various automation equipment:

- via the various **possible protocols** for ABB AC31, series 40&50, series 90, AC500 PLCs and more than 100 leading PLCs on the market, where the display acts as gateway. The multi protocol also allows data to be exchanged between the various controllers.
- via **multi-channel communication** (Connecting a controller to each available port via different protocols, transferring values between drivers via macros, using the values of various controllers in the calculations).
- via the **multiple connection media** (RS232, RS485, RS422 or Ethernet...) increasing connection capacities.





**For the entire range:**

- 32 bit RISC CPU
- Graphics and text
- Macro and Ladder
- On-line and off-line simulation
- Real time clock
- Password protection
- 4 MB flash memory
- 24 V DC  $\pm$  15% supply voltage
- Ambient temperature: 0 to 50 °C
- IP65 class protection
- Conform to ROHS

Description	Type	Part Number
Programming software	CP400Soft	1SBS260284R1001
RS232 programming cable	TK401	1SBN260216R1001
Programming cable	TK402	1SBN260217R1001
RS232, AC31 communication cable (40&50)	TK403	1SBN260218R1001
RS232, AC31 communication cable series 90	TK404	1SBN260220R1001
RS232, AC500 communication cable	TK405	1SBN260221R1001



	CP410M	CP420B	CP430B	CP430B-ETH	CP430C	CP430C-ETH	CP440C-ETH	CP450T	CP450T-ETH
<b>Part numbers</b>	1SBP260181R1001	1SBP260182R1001	1SBP260183R1001	1SBP260184R1001	1SBP260185R1001	1SBP260186R1001	1SBP260187R1001	1SBP260188R1001	1SBP260189R1001
<b>Monitor type</b>	LCD-STN 16 grey	Touch 16 blue STN	Touch 16 blue, STN		Touch 256 colours, STN		Touch 64K colours, STN	Touch 64K colours, TFT	
<b>Monitor size</b>	3"	4.7"	5.7"		5.7"		7.5"	10.4"	
<b>Resolution (Pixels)</b>	160 x 80	320 x 240	320 x 240		320 x 240		640 x 480	640 x 480	
<b>Brightness (cd/m2)</b>	36	110	110		300		350	350	
<b>Contrast setting</b>	Via VR (variable resistance)	Via touch panel	Via touch panel and VR (variable resistance) at rear				Via touch panel	-	
<b>Type of back-lighting</b>	LED	CCFL	CCFL				CCFL	CCFL	
<b>Duration of back-lighting</b>	75 000 hours	50 000 hours	50 000 hours		75 000 hours		45 000 hours	50 000 hours	
<b>Touch screen (number of times pressed)</b>	> 500 000	> 1 000 000	> 1 000 000				> 1 000 000	> 1 000 000	
<b>Main functions</b>	16 keys (10 of which may be function keys)	-	5 keys + 1 key menu				6 keys + 1 key menu	7 keys + 1 key menu	
<b>Ethernet</b>	-	-	-	•	-	•	•	-	•
<b>Alarm management</b>	-	•	-	•	-	•	•	-	•
<b>Acceptance test management</b>	-	-	-	•	-	•	•	-	•
<b>Data/acceptance tests</b>	-	-	-	•	512 KB	•	512 KB	-	512 KB
<b>Trend curves</b>	-	•	-	•	-	•	•	-	•
<b>Data storage (CF card - compact flash)</b>	-	-	-	•	-	•	•	-	•
<b>Communication interface</b>	1	2	-	•	2	•	3	-	3
<b>USB 2.0</b>	-	-	-	•	-	•	2 Masters + 1 Peripheral	-	2 Masters + 1 Peripheral
<b>Printer port</b>	-	-	-	•	-	•	USB	-	USB
<b>Consumption</b>	< 330 mA	< 500 mA	-	•	< 840 mA	•	< 1 A	-	< 1.25 A
<b>Dimensions mm L x H x D</b>	173 x 106 x 52	170 x 103 x 45	-	•	195 x 145 x 60	•	231 x 176 x 47	-	297 x 222 x 52
<b>Weight (kg)</b>	0,65	0,47	-	•	0,81	•	1,20	-	1,90



**Gross Automation**

1725 South Johnson Rd.  
New Berlin, WI 53146  
Tel 262-446-0000  
Fax 262-446-0300