

# Transfer of an AC010 project into a CL device

## Version 1: Import of AC010 projects into CL-SOFT

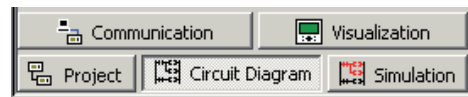


With the CL-SOFT software it is no longer possible to address AC010 devices. There are two possibilities of transferring an existing project / program from an AC010 to a CL logic relay.

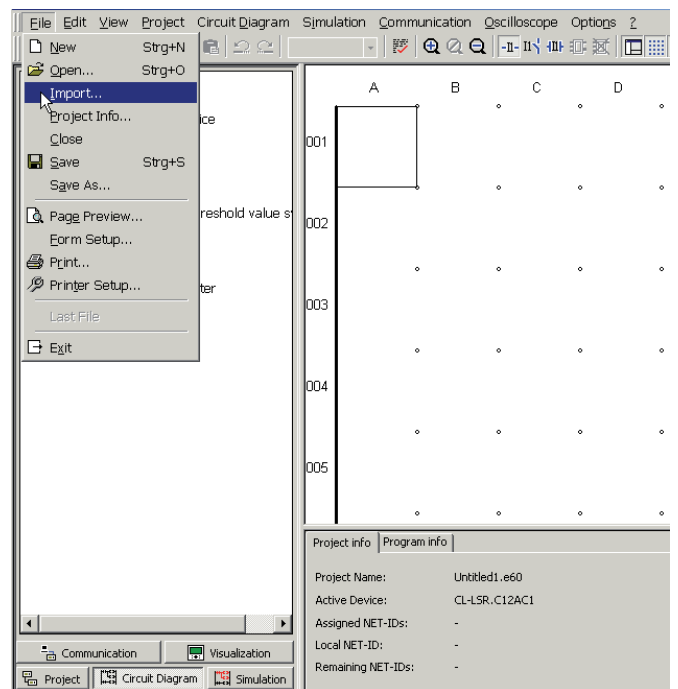
On one hand, AC010 projects (ending ".eas") can be imported into the CL-SOFT software and then transferred to the CL device (Version 1). This version offers the advantage that the complete AC010 program, annotations included, is taken over.

On the other hand the readout of the AC010 program can be made with a memory module (Version 2).

3. Change to the view **Circuit Diagram**

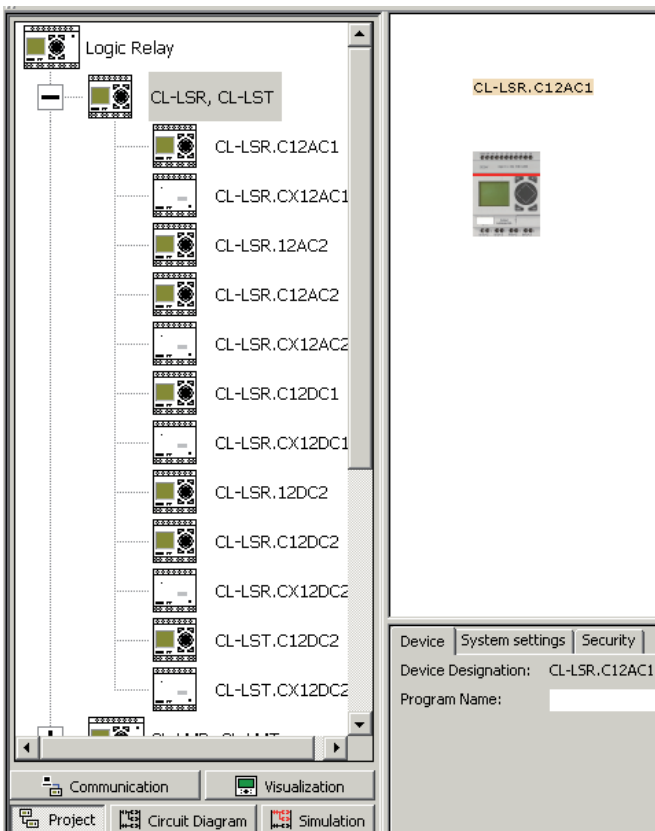


4. Choose **File** → **Import**

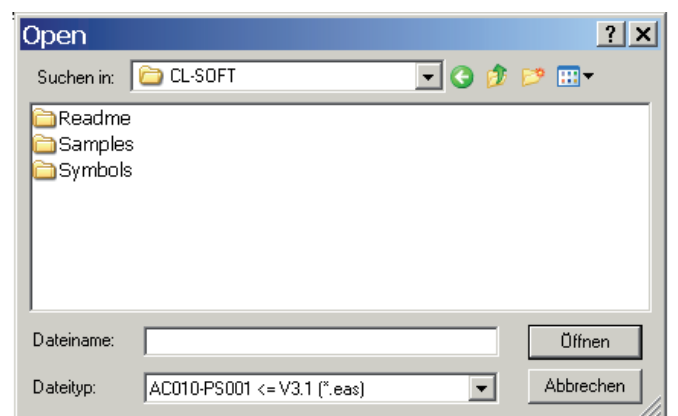


### Version 1: Import of AC010 projects into CL-SOFT

1. Boot up CL-SOFT
2. Go to the view **Project** and choose a device, e.g. CL-LSR.C12AC1



Here you can choose older projects with the ending ".eas" and load them



# Transfer of an AC010 project into a CL device

## Version 2: Load AC010 programs out of a memory module

### Version 2: Load AC010 programs out of a memory module

With the memory modules MD001 and MD002 circuit diagrams can be transferred with all data into the CL devices CL-LRS/LST and CL-LMR/LMT. The opposite direction is blocked. Each memory module can record only one AC010 circuit diagram.

1. Record the AC010 circuit diagram on the memory module.
2. Plug the memory module onto the CL logic relay and load the circuit diagram.

#### Load or record the circuit diagram:

Circuit diagrams can be transferred only if operating mode STOP is selected

#### Behaviour of CL devices without keypad when loading the circuit diagram from the memory module:

If the memory module is plugged on CL devices without keypad and without LCD display, the circuit diagram is automatically transferred from the memory module into the logic relay, as soon as the voltage is switched on. If the circuit diagram on the memory module is invalid, the existing circuit diagram in the logic relay remains.

#### Behaviour of CL devices with keypad and with memory module plugged onto:

If the logic relay does not contain any circuit diagram, the circuit diagram of the memory module is automatically loaded when switching on

Further details are obtainable from the Application manual (1SVC 440 795 M0100).

