

# CP Series Touchscreens



## CP Series touch screens



### Index

General information .....	11.2
Ordering information .....	11.5 - 11.6
Overview .....	11.3 - 11.4



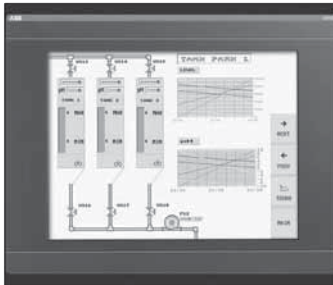
CP501



CP551



CP554



CP555



CP513



CP502

### Communication between user and machine

The operator terminals CP5xx ideally fulfill the requirements of automated processes for more transparency and efficiency: they create insight into the activities and the conditions of machines and installations and they allow for an intervention into the proceedings that happen there.

To this end we offer an extensive line of operator terminals, that ranges from the basic CP 501 for the display of text to devices that provide a graphics screen to the touch-panel CP 555 with a color display. They communicate with the controllers of the Advant Controller 31 system and have read and write access to the data of these controllers.

The communication between operator terminal and controller happen via the serial interface. When running complex applications Ethernet or various other bus systems can also be used.

The same software is used for all devices for fast and easy configuration. The commands and programming language are identical for all devices.

The function keys of most devices consist of switchable 2-color LEDs, marking stripes allow for the labeling and thus support the convenient operator guidance.

The front cover of all devices offer protection class IP65.

Depending on the type, the operator terminals offer the following functions:

- Real-time clock
- Alarm management in numerous groups
- Trends
- Recipe management
- Print-outs of reports
- Pass-word protection
- Memory up to 1600 kB Flash

## Overview

Screens



Display type	STN-LCD with background illum.	STN-LCD with background illum.	STN-LCD with background illum.	STN-LCD with background illum.	B/W-STN-LCD with background illum.
Display	text	text	text	graphics und text	graphics and text
Display size	2 lines x 16 characters	2 lines x 20 characters	4 lines x 20 characters	240 x 64 Pixel	240 x 128 Pixel
Display area W x H (mm)	55.7 x 11.0	73.5 x 11.5	70.4 x 20.8	127.2 x 33.9	120.0 x 64.0
Text height (mm)	5	5	5	variable	variable
LEDs			5 (2 colors)	16 (2 colors)	16 (2 colors)
Function keys	4	3	5	8	16 (8 with labels to write on)
Web functions				P	P
Buzzer				P	P
Alarm management			1 groups	4 groups	4 groups
Time channel		P	P	P	P
Real-time clock		P	P	P	P
Trends				real time	trend
Recipe managment		P	P	P	P
Print-outs of reports		P	P	P	P
Pass-word protection		8 levels	8 levels	8 levels	8 levels
Multi language support		P	P	P	P
Memory for applications	16 kB Flash	64 kB Flash	64 kB Flash	400 kB Flash	400 kB Flash
Voltage supply	24 V DC	24 V DC	24 V DC	24 V DC	24 V DC
Current consumption			150 mA	450 mA	450 mA
Ambient temperature	0 – 50 °C	0 – 50 °C	0 – 50 °C	0 – 50 °C	0 – 50 °C
Communication interface	RS232 oder RS422	RS232, RS422/ RS485	RS232, RS422	RS232, RS422	RS232, RS422
Extension slot	–	–	–	1	1
Protection class front cover	IP65	IP65	IP65	IP65	IP65
Dimensions W x H x D (mm)	104 x 69 x 38	142 x 100 x 29	147 x 163,5 x 38	211 x 198 x 69	214 x 232 x 87
Weight (kg)	0.2	0.5	0.7	1.5	1.4

11



CP513



CP551



CP552



CP554



CP555

Color-LCD with background illum.	Touch-B/W-STN with background illum.	Touch-LCD 16 gray scales	Color-Touch-Display, TFT	Color-Touch-Display, TFT
graphics and text	graphics and text	graphics and text	graphics and text	graphics and text
320 x 240 Pixel	320 x 240 Pixel	320 x 240 Pixel	320 x 240 Pixel	640 x 480 Pixel
5.7" 115.2 x 86.4	3.8" 78.0 x 58.5	5.7" 115.2 x 86.4	5.7" 115.2 x 86.4	10.4" 211.2 x 158.4
variable	variable	variable	variable	variable
16 (2 colors)				
16 (8 with labels to write on)				
P	P	P	P	P
P	P	P	P	P
16 groups	4 groups	5 groups	5 groups	11 groups
P	P	P	P	P
P	P	P	P	P
trend	trend	trend	trend	trend
P	P	P	P	P
P	P	P	P	P
8 levels	8 levels	8 levels	8 levels	8 levels
P	P	P	P	P
400 kB Flash	400 kB Flash	400 kB Flash	400 kB Flash	1600 kB Flash
24 V DC	24 V DC	24 V DC	24 V DC	24 V DC
550 mA	450 mA	400 mA	450 mA	1 A
0 – 50 °C	0 – 50 °C	0 – 50 °C	0 – 50 °C	0 – 50 °C
RS232, RS422	Ethernet RS232, RS422/ RS485	RS232, RS422/ RS485	RS232, RS422/ RS485	RS232, RS422
2		1	1	2
IP65	IP65	IP65	IP65	IP65
276 x 198 x 89	138 x 100 x 30	200 x 150 x 69	200 x 150 x 69	290 x 250 x 105
1.7	1.4	1.5	1.5	3.3

## Ordering information

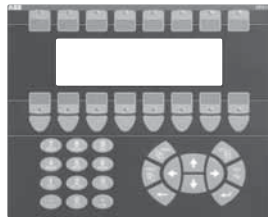


CP502

### Operator Terminals with text display

- LCD with background illumination
- Voltage supply 24 V DC
- CP502/503: with real-time clock
- Recipe management
- Pass word protection in 8 levels
- Multi language support

Type	Lines	characters/ line	Function/ other keys	LEDs	Interfaces	Catalog number	Weight 1 piece kg
CP501	2	16	4		RS232 or RS422	1SBP 260170 R1001	0.2
CP502	2	20	3 / 20		RS232, RS422, RS485	1SBP 260171 R1001	0.5
CP503	4	20	5 / 22	5	RS232, RS422	1SBP 260172 R1001	0.7



CP511

### Operator Terminals with graphics display

- LCD with background illumination
- CP513 with color display
- Voltage supply 24 V DC
- Graphics- and text display
- Real-time clock
- Trends
- Recipe management
- Pass word protection in 8 levels
- Multi language support
- Memory 400 kB

Type	Pixel	Function/ other keys	LEDs	Interfaces	Catalog number	Weight 1 piece kg
CP511	240 x 64	8 / 22	16	RS232, RS422	1SBP 260173 R1001	1.5
CP512	240 x 128	16 / 22	16	RS232, RS422	1SBP 260174 R1001	1.4
CP513	320 x 240	16 / 22	16	RS232, RS422	1SBP 260175 R1001	1.7



CP555

### Operator Terminals with touch-display

- LCD with background illumination
- CP554 and CP555 with TFT color-display
- Voltage supply 24 V DC
- Graphics- and text display
- Real-time clock
- Trends
- Recipe management
- Pass word protection in 8 levels
- Multi language support
- Memory 400 kB (CP555: 1600 kB)

Type	Pixel	Display	Interfaces	Catalog number	Weight 1 piece kg
CP551	320 x 240	B/W - STN	RS232, RS422, RS485	1SBP 260176 R1001	1.4
CP552	320 x 240	B/W - STN	RS232, RS422, RS485	1SBP 260177 R1001	1.5
CP554	320 x 240	Color TFT	RS232, RS422, RS485	1SBP 260178 R1001	1.5
CP555	640 x 480	Color TFT	RS232, RS422	1SBP 260179 R1001	3.3

## Ordering information

### Programming cable

Type	Interface	Catalog number
CAB5	RS232	1SBN 260210 R1001
CAB6	RS232/RS422 converter	1SBN 260211 R1001

### Communications cable

Type	Controller	Catalog number
CAB45	series 40 / 50 MiniDin	1SBN 260213 R1001
CAB90	series 90	1SBN 260214 R1001
CAB8	RS422/RS485 converter	1SBN 260212 R1001

### Programming software for operator terminals CP5xx

For all operator terminals CP5xx, delivery on CD-ROM.  
Includes documentation for all operator terminals CP5xx.

Type	Description	Catalog number
CPsoft	Software, documentation on CD	1SBS 260283 R0101

### Accessories

Type	Description	Catalog number
CK516	Add-on keyboard	1SBP 260180 R1001
IFCPBDP	Communication interface PROFIBUS DP	1SBN 260320 R1001
IFCETTP	Communication interface Ethernet	1SBN 260322 R1001
IFC-PI	Printer interface	1SBN 260325 R1001
IFC-MC	Interface for Smart Media Card (memory card not included)	1SBN 260324 R1001
PCMCIA 4MB	Smart Media Card 4 MB	1SBN 260326 R1001
PCMCIA 8MB	Smart Media Card 8 MB	1SBN 260327 R1001
Protection sheet CP551	Protection sheet for display CP551 (5 pcs.)	1SBN 260330 R1001
Protection sheet CP552	Protection sheet for display CP552 (5 pcs.)	1SBN 260328 R1001
Protection sheet CP554	Protection sheet for display CP554 (5 pcs.)	1SBN 260331 R1001
Protection sheet CP555	Protection sheet for display CP555 (5 pcs.)	1SBN 260329 R1001