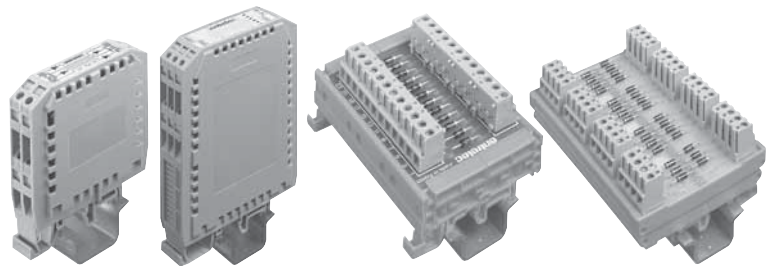


Diode logic modules



Diode logic modules



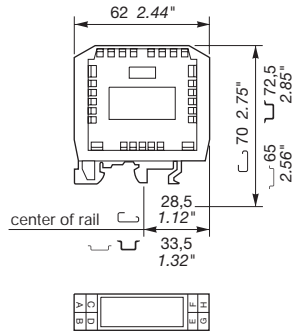
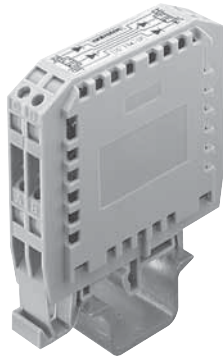
Index

Logical signal conditioners.....	15.1 - 15.8
Series 10 000.....	15.2
Series 11 000.....	15.3
Series 20 000.....	15.4 - 15.8

Logical signal conditioners

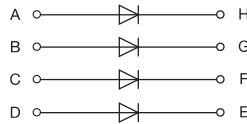
Diode modules

Series 10 000, DIN 1-3



Diode module
EB 4 D

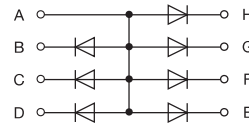
Spacing 18 mm .709"



Diodes 1 N 4007

Diode module with common on anode
EB 7 DA

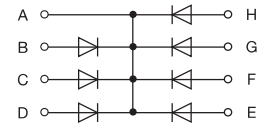
Spacing 18 mm .709"



Diodes 1 N 4007

Diode module with common on cathode
EB 7 DC

Spacing 18 mm .709"



Diodes 1 N 4007

Functions :

- bussing signals
- decoupling of common signals
- protection against reverse voltage
- relay coil protection

Part numbers

	Type	Catalog number	Type	Catalog number	Type	Catalog number
	EB 4 D	1SNA010134R1700	EB 7 DA	1SNA010135R1000	EB 7 DC	1SNA010136R1100
Approvals (Contact Entelec)	CE		CE		CE	

15

Characteristics

Average direct current	0.5 A at 40° C	0.5 A at 40° C	0.5 A at 40° C
Voltage drop at 0.5 A	1 V	1 V	1 V
Repetitive peak-reverse voltage	1000 V	1000 V	1000 V
Peak current	50 A / 10 ms	50 A / 10 ms	50 A / 10 ms
Max. current on common		3.5 A	3.5 A
TEMPERATURE			
Ambient temperature			
Storage	- 40°C to + 80°C	- 40°C to + 80°C	- 40°C to + 80°C
Operating temperature	- 20°C to + 40°C	- 20°C to + 40°C	- 20°C to + 40°C

Accessories, marking, wire size : see Accessories section.

Logical signal conditioners

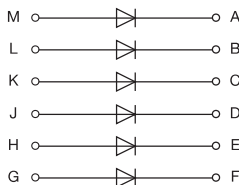
Diode modules

Series 11 000, DIN 1-3



Diode module
EB 6 D

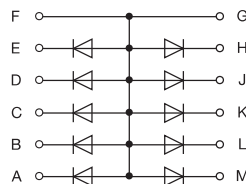
Spacing 22.5 mm .886"



Diodes 1 N 4007

Diode module with common anode
EB 10 DA

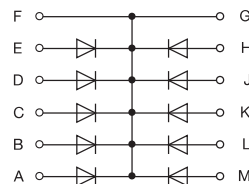
Spacing 22.5 mm .886"



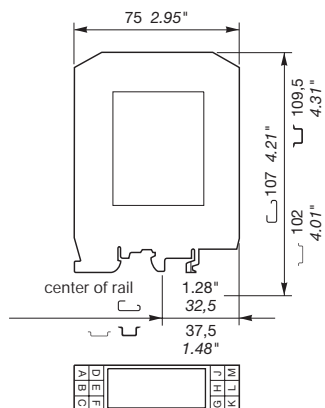
Diodes 1 N 4007

Diode module with common on cathode
EB 10 DC

Spacing 22.5 mm .886"



Diodes 1 N 4007



Functions :

- bussing signals
- decoupling of common signals
- protection against reverse voltage
- relay coil protection

Part numbers

	Type	Catalog number	Type	Catalog number	Type	Catalog number
	EB 6 D	1SNA011060R2100	EB 10 DA	1SNA011056R1100	EB 10 DC	1SNA011057R1200
Approvals (Contact Entrelec)	CE		CE		CE	

Characteristics

Average direct current	0.5 A at 40° C	0.5 A at 40° C	0.5 A at 40° C
Voltage drop at 0.5 A	1 V	1 V	1 V
Repetitive peak-reverse voltage	1000 V	1000 V	1000 V
Peak current	50 A / 10 ms	50 A / 10 ms	50 A / 10 ms
Max. current on common	5 A	5 A	5 A
TEMPERATURE			
Ambient temperature	- 40°C to + 80°C	- 40°C to + 80°C	- 40°C to + 80°C
Storage	- 20°C to + 40°C	- 20°C to + 40°C	- 20°C to + 40°C
Operating temperature	- 20°C to + 40°C	- 20°C to + 40°C	- 20°C to + 40°C

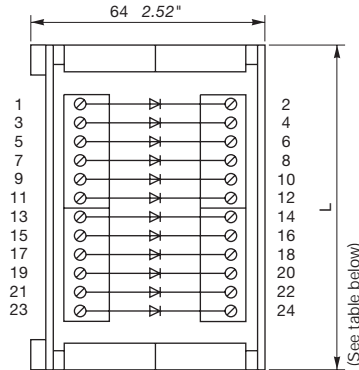
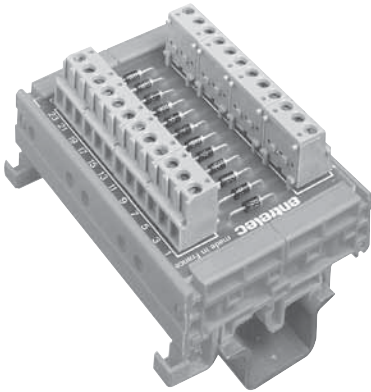
Accessories, marking, wire size : see Accessories section.

Logical signal conditioners

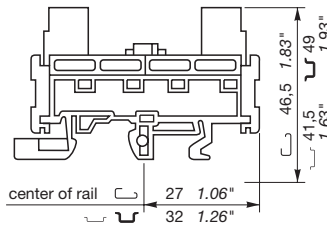
Diode modules

Series 20 000, DIN 1-3

BFM 12 D



Module delivered without identification
Diodes 1 N 4007



- Functions :
- bussing signals
 - decoupling of common signals
 - protection against reverse voltage
 - relay coil protection

15

Part numbers

	Type	Catalog number	Length L, mm inch.
12 diodes	BFM 12 D	1SNA020023R1500	83.6 3.30"
Approvals (Contact Entelec)		CE	

Characteristics

		DIN-VDE	UL	CSA	NFC-UTE
Wire size	Screw-clamp	0 - 2.5 mm ²	14 AWG	14 AWG	0 - 2.5 mm ²
Voltage	V AC- DC =	250 ^① 250 ^①			250 ^② 250 ^②
Test voltage	KV				
Current	A	1			1
Characteristics of diodes 1 N 4007		1000 V peak - 250 V rating - 1 A			

Max. current in the common
Self-extinguishing polyamide base - CI epoxy glass 1.6 mm .063" 35 µm CU with long-oil varnish
Accessories, marking, wire size : see Accessories section.

① Values in compliance VDE 0110 Group A
② Values in compliance NFC 20040 Category A

Logical signal conditioners

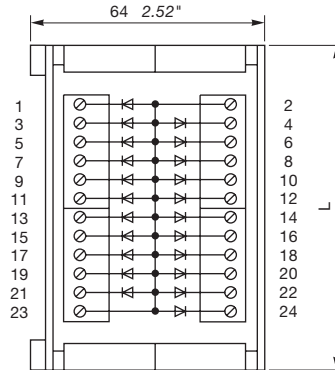
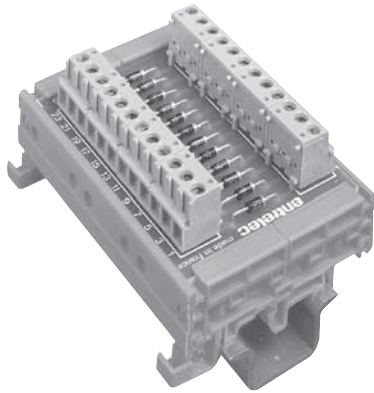
Diode modules

Series 20 000, DIN 1-3

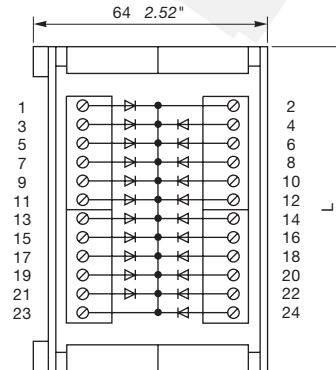
Diode Modules ic

Diode module with common on anode
BFM ... DA

Diode module with common on cathode
BFM ... DC



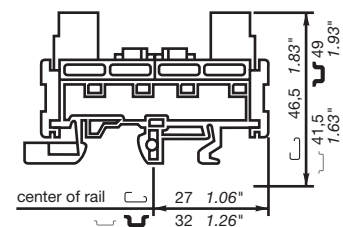
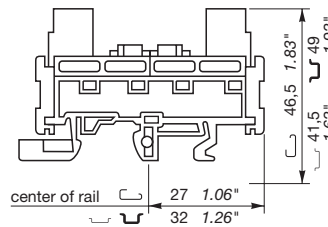
(See table below)



(See table below)

Module delivered without identification
Diodes 1 N 4007

Module delivered without identification
Diodes 1 N 4007



- Functions :
- bussing signals
 - decoupling of common signals
 - protection against reverse voltage
 - relay coil protection

Part numbers

	Type	Catalog number	Length L. mm inch.	Type	Catalog number	Length L. mm inch.	
10 diodes	BFM 10 DA	1SNA020025R1700	50.6 2.00"	BFM 10 DC	1SNA020026R1000	50.6 2.00"	
22 diodes	BFM 22 DA	1SNA020021R1300	83.6 3.30"	BFM 22 DC	1SNA020022R1400	83.6 3.30"	
CE				CE			

Characteristics

		DIN-VDE	UL	CSA	NFC-UTE	DIN-VDE	UL	CSA	NFC-UTE
Wire size	Screw-clamp	0 - 2.5 mm ²	14 AWG	14 AWG	0 - 2.5 mm ²	0 - 2.5 mm ²	14 AWG	14 AWG	0 - 2.5 mm ²
Voltage	V AC- DC =	250① 250②			250① 250②	250① 250②			250① 250②
Test voltage	KV								
Current	A	1			1	1			1
Characteristics of diodes 1 N 4007		1000 V peak - 250 V rating - 1 A				1000 V peak - 250 V rating - 1 A			
Max. current in the common		BFM10 DA 5 A		BFM 22 DA 8 A		BFM 10 DC 5 A		BFM 22 DC 8 A	

Self-extinguishing polyamide base - CI epoxy glass 1.6 mm .063" 35 µm CU with long-oil varnish
Accessories, marking, wire size : see Accessories section.

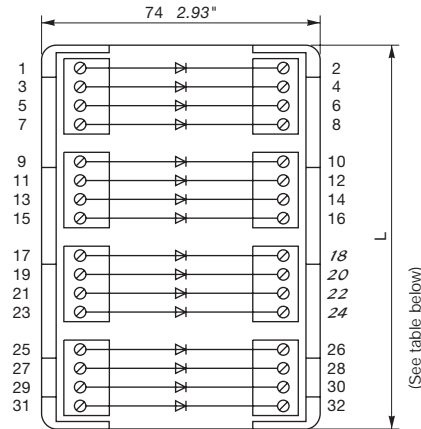
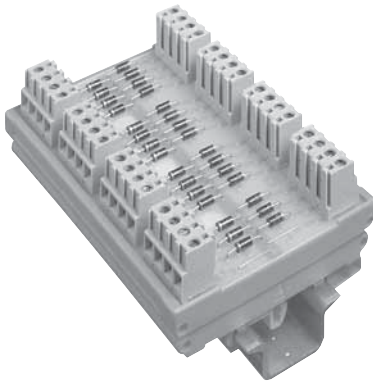
① Values in compliance VDE 0110 Group A
② Values in compliance NFC 20040 Category A

Logical signal conditioners

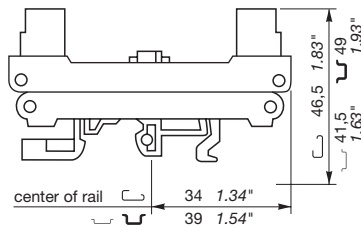
Diode modules

Series 20 000, DIN 1-3

EM...D



Module delivered without identification
Diodes 1 N 4007



Functions :

- bussing signals
- decoupling of common signals
- protection against reverse voltage
- relay coil protection

Part numbers

	Type	Catalog number	Length L. mm inch.
4 diodes	EM 4 D	1SNA020263R0200	25.4 1.00"
8 diodes	EM 8 D	1SNA020264R0300	50.8 2.00"
16 diodes	EM 16 D	1SNA020265R0400	101.6 4.00"

Approvals (Contact Entelec)



Characteristics

		DIN-VDE	UL	CSA	NFC-UTE
Wire size	Screw-clamp	0 - 2.5 mm ²	14 AWG	14 AWG	0 - 2.5 mm ²
Voltage	V AC- DC =	250 ^① 250 ^①			250 ^② 250 ^②
Test voltage	KV				
Current	A	1			1
Characteristics of diodes 1 N 4007		1000 V peak - 250 V rating - 1 A			

Max. current in the common

Self-extinguishing polyamide base - CI epoxy glass 1.6 mm .063" 35 µm CU with long-oil varnish Accessories, marking, wire size : see Accessories section.

① Values in compliance VDE 0110 Group A

② Values in compliance NFC 20040 Category A

Logical signal conditioners

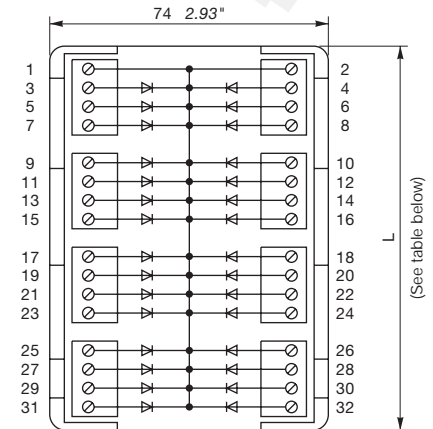
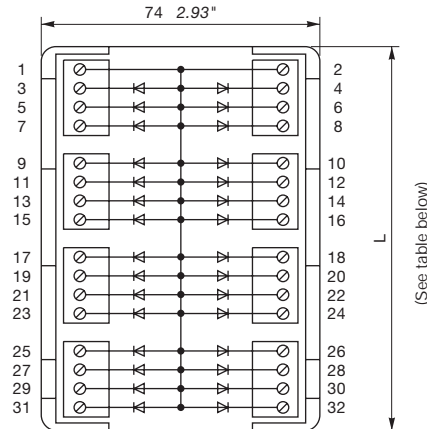
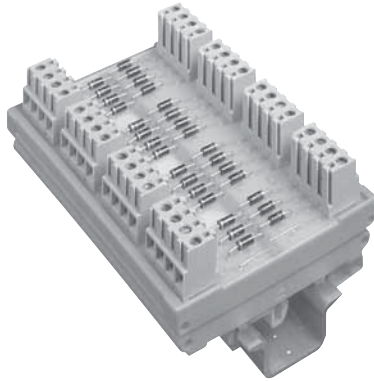
Diode modules

Series 20 000, DIN 1-3

Diode Modules ic

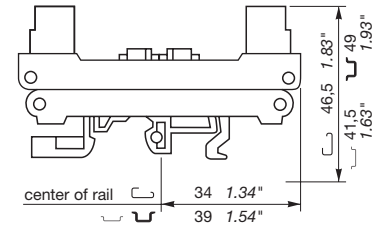
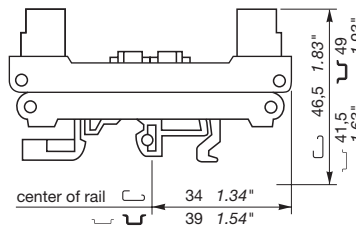
Diode module with common on anode
EM ... DA

Diode module with common on cathode
EM ... DC



Module delivered without identification
Diodes 1 N 4007

Module delivered without identification
Diodes 1 N 4007



- Functions :
- bussing signals
 - decoupling of common signals
 - protection against reverse voltage
 - relay coil protection

Part numbers

	Type	Catalog number	Length L. mm inch.	Type	Catalog number	Length L. mm inch.
6 diodes 14 diodes 30 diodes	EM 6 DA	1SNA020266R0500	25.4 1.00"	EM 6 DC	1SNA020269R1000	25.4 1.00"
	EM 14 DA	1SNA020267R0600	50.8 2.00"	EM 14 DC	1SNA020270R1500	50.8 2.00"
	EM 30 DA	1SNA020268R1700	101.6 4.00"	EM 30 DC	1SNA020271R0200	101.6 4.00"

Approvals (Contact Entelec)



Characteristics

		DIN-VDE	UL	CSA	NFC-UTE	DIN-VDE	UL	CSA	NFC-UTE
Wire size	Screw-clamp	0 - 2.5 mm ²	14 AWG	14 AWG	0 - 2.5 mm ²	0 - 2.5 mm ²	14 AWG	14 AWG	0 - 2.5 mm ²
Voltage	V AC - DC =	250 ^① 250 ^②			250 ^② 250 ^③	250 ^① 250 ^①			250 ^② 250 ^②
Test voltage	KV				1	1			1
Current	A	1							
Characteristics of diodes 1 N 4007		1000 V peak - 250 V rating - 1 A				1000 V peak - 250 V rating - 1 A			
Max. current in the common		EM 6 DA 3 A	EM 14 DA 7 A	EM 30 DA 8 A	EM 6 DC 3 A	EM 14 DC 7 A	EM 30 DC 8 A		

Self-extinguishing polyamide base - CI epoxy glass 1.6 mm .063" 35 µm CU with long-oil varnish
Accessories, marking, wire size : see Accessories section.

① Values in compliance VDE 0110 Group A
② Values in compliance NFC 20040 Category A

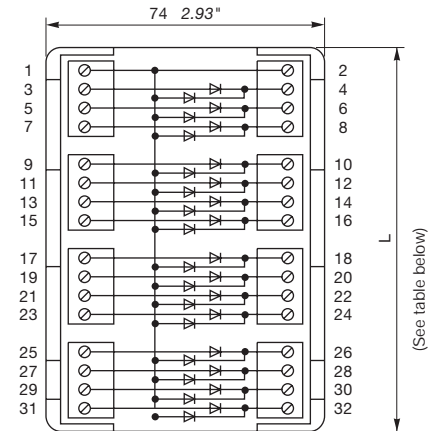
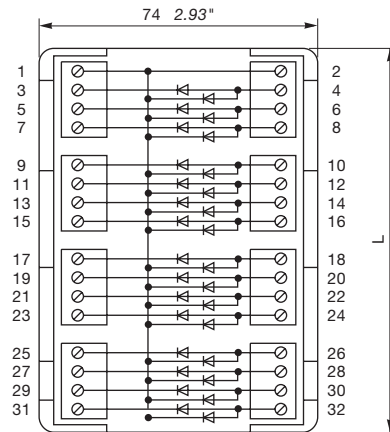
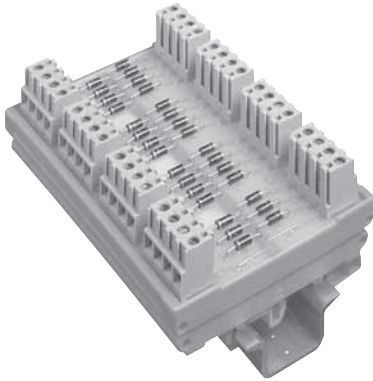
Logical signal conditioners

Diode modules

Series 20 000, DIN 1-3

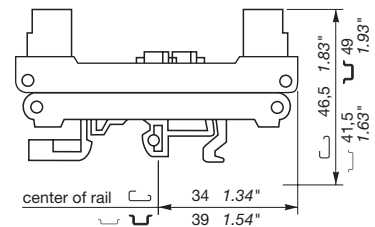
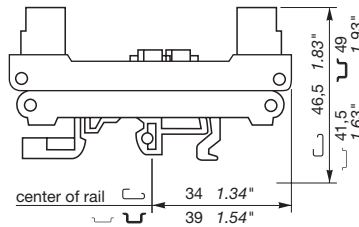
Pairs of diodes with common anode and test with common on cathode
EM ... DTA

Pairs of diodes with common cathode and test with common on anode
EM ... DTC



Module delivered without identification
Diodes 1 N 4007

Module delivered without identification
Diodes 1 N 4007



- Functions :
- bussing signals
 - decoupling of common signals
 - protection against reverse voltage
 - relay coil protection

15

Part numbers

	Type	Catalog number	Length L. mm inch.	Type	Catalog number	Length L. mm inch.
15 diodes	EM 15 DTA	1SNA020280R0000	101.6 4.00"	EM 15 DTC	1SNA020283R2700	101.6 4.00"
Approvals (Contact Entelec)	CE			CE		

Characteristics

		DIN-VDE	UL	CSA	NFC-UTE	DIN-VDE	UL	CSA	NFC-UTE
Wire size	Screw-clamp	0 - 2.5 mm ²	14 AWG	14 AWG	0 - 2.5 mm ²	0 - 2.5 mm ²	14 AWG	14 AWG	0 - 2.5 mm ²
Voltage	V AC- DC =	250① 250①			250② 250②	250① 250①			250(2) 250(2)
Test voltage	KV								
Current	A	1			1	1			1
Characteristics of diodes 1 N 4007		1000 V peak - 250 V rating - 1 A				1000 V peak - 250 V rating - 1 A			
Max. current in the common		EM 15 DTA 7 A				EM 15 DTC 7 A			

Self-extinguishing polyamide base - Cl epoxy glass 1.6 mm .063" 35 µm CU with long-oil varnish
Accessories, marking, wire size : see Accessories section.

① Values in compliance VDE 0110 Group A
② Values in compliance NFC 20040 Category A