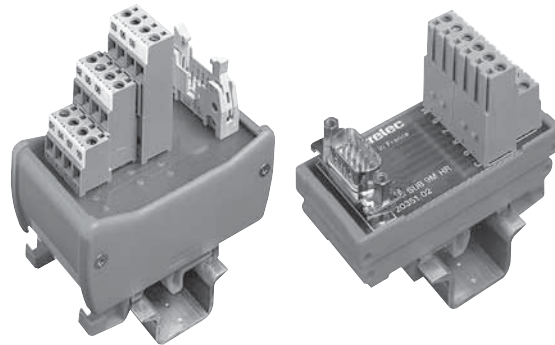


Wiring interface modules



Wiring interface modules

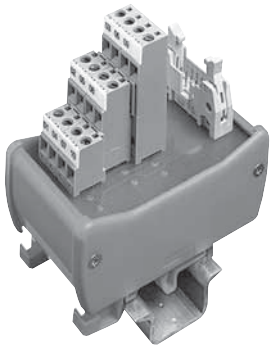


Index

| | |
|-----------------------------------|------|
| Screw-clamp modules, HE 10..... | 12.2 |
| Screw-clamp modules, Sub. D | 12.3 |

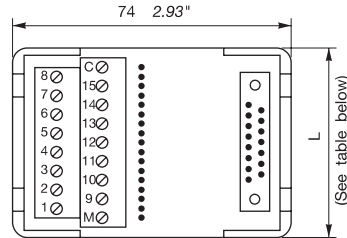
Screw-clamp modules - HE 10

Series 20 000, DIN 1-3

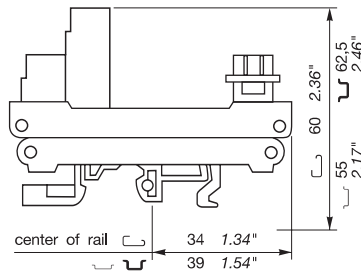


Note: See Section 6, PLC Wiring Systems, for additional connection interfaces.

BFM HE 10/...3E



Screw terminals - Male HE 10 connector
As per DIN 41 651 and NFC 93 428 standard



Easy interface of electronic flat cable with field wiring.
Error-proof connection reduces wiring time.

Catalog numbers

| | Type | Catalog number | Length L. mm inch |
|-----------|-----------------|-----------------|----------------------|
| 10 points | BFM HE 10/10.3E | 1SNA020294R2200 | 45 1.77" |
| 14 points | BFM HE 10/14.3E | 1SNA020295R2300 | 45 1.77" |
| 16 points | BFM HE 10/16.3E | 1SNA020296R2400 | 45 1.77" |
| 20 points | BFM HE 10/20.3E | 1SNA020297R2500 | 59 2.32" |
| 26 points | BFM HE 10/26.3E | 1SNA020298R0600 | 59 2.32" |
| 34 points | BFM HE 10/34.3E | 1SNA020299R0700 | 79 3.11" |
| 40 points | BFM HE 10/40.3E | 1SNA020300R1400 | 79 3.11" |
| 50 points | BFM HE 10/50.3E | 1SNA020301R0100 | 100 3.94" |
| 60 points | BFM HE 10/60.3E | 1SNA020302R0200 | 110 4.33" |
| 64 points | BFM HE 10/64.3E | 1SNA020303R0300 | 124 4.38" |

Approvals (Contact Entelec)



Characteristics

| | | DIN-VDE | UL | CSA | NFC-UTE |
|--------------|-------------------|-------------------------|--------|--------|-------------------------|
| Wire size | Screw-clamp block | 0 - 2.5 mm ² | 14 AWG | 14 AWG | 0 - 2.5 mm ² |
| | Connector | 28 AWG | 28 AWG | 28 AWG | 28 AWG |
| Voltage | V AC ~ | 60 (1) | | | 60 (2) |
| | DC = | 60 (1) | | | 60 (2) |
| Test voltage | KV | 1 | | | 1 |
| Current | A | 1 | | | 1 |

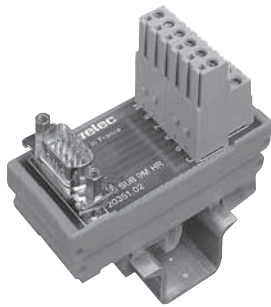
Self-extinguishing polyamide base - UL94V2 Ultramid - Epoxy PCB 1.6 mm .063" 35 µm CU with conformal coating

(1) Values in compliance with VDE 0110 group C - (2) Values compliance with NFC 20040 category C

Accessories, marking, wire size : see Accessories section.

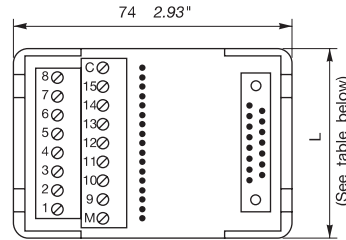
Screw-clamp modules - Sub. D

Series 20 000, DIN 1-3



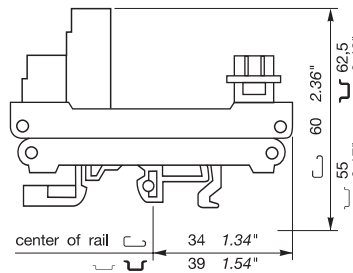
Note: See Section 6, PLC Wiring Systems, for additional connection interfaces.

BFM SUB...M HR

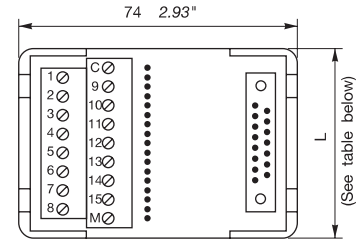


(Example of Sub D, 15 points)

Compression clamp terminal blocks - Male SUB.D connector. As per DIN 41 652 standard.

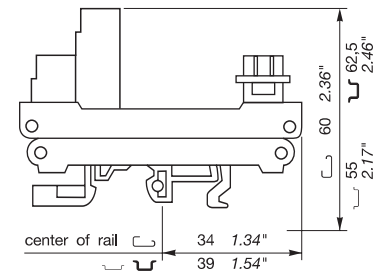


BFM SUB...F HR



(Example of Sub D, 15 points)

Compression clamp terminal blocks - Female SUB.D connector. As per DIN 41 652 standard.



Easy interface of electronic cable with field wiring. Error-proof connection reduces wiring time. For ground connection of connector. UNC 4-40 locking screws.

Catalog numbers

| | Type | Catalog number | Length L. mm inch | Type | Catalog number | Length L. mm inch |
|-----------|-----------------|-----------------|----------------------|-----------------|-----------------|----------------------|
| 9 points | BFM SUB 9 M HR | 1SNA020351R0200 | 33 1.30" | BFM SUB 9 F HR | 1SNA020356R0700 | 33 1.30" |
| 15 points | BFM SUB 15 M HR | 1SNA020352R0300 | 48.3 1.90" | BFM SUB 15 F HR | 1SNA020357R0000 | 48.3 1.90" |
| 25 points | BFM SUB 25 M HR | 1SNA020353R0400 | 73.7 2.90" | BFM SUB 25 F HR | 1SNA020358R1100 | 117.1 4.61" |
| 37 points | BFM SUB 37 M HR | 1SNA020354R0500 | 101.6 4.00" | BFM SUB 37 F HR | 1SNA020359R1200 | 104.1 4.10" |
| 50 points | BFM SUB 50 M HR | 1SNA020355R0600 | 137.2 5.40" | BFM SUB 50 F HR | 1SNA020360R1700 | 137.2 5.40" |

Approvals (Contact Entelec)



Characteristics

| | | | DIN-VDE | | | | UL | | | | CSA | | | | NFC-UTE | | | |
|--------------|-------------------|--------------|--------------------------|--|--------|--|--------|--|-------------------------|--|-------------------------|--|--------|--|---------|--|-------------------------|------|
| | | | 0 - 2.5 mm ² | | 14 AWG | | 14 AWG | | 0 - 2.5 mm ² | | 0 - 2.5 mm ² | | 14 AWG | | 14 AWG | | 0 - 2.5 mm ² | |
| Wire size | Screw-clamp block | | According to socket used | | | | | | | | | | | | | | | |
| | Connector | | According to plug used | | | | | | | | | | | | | | | |
| Voltage | V | AC ~ DC = | 60 ① | | | | | | 60 ② | | | | | | | | | 60 ② |
| Test voltage | KV | | 1 | | | | | | 1 | | | | | | | | | 1 |
| Current | A | | 1 | | | | | | 1 | | | | | | | | | 1 |

Self-extinguishing polyamide base - UL94V2 Ultradid - Epoxy PCB 1.6 mm .063" 35 µm CU with conformal coating

① Values as per VDE 0110 group C

② Values as per NFC 20040 category C

Accessories, marking, wire size : see Accessories section.

